

SEVERE WEATHER BULLETIN #4
FOR: TROPICAL DEPRESSION "#PepitoPH"
TROPICAL CYCLONE: WARNING
ISSUED AT 11:00 PM, 19 October 2020

(Valid for broadcast until the next bulletin to be issued at 2 AM tomorrow)

TROPICAL DEPRESSION "PEPITO" CONTINUES TO MOVE WEST-NORTHWESTWARD
OVER THE PHILIPPINE SEA EAST OF BICOL REGION.

Track and intensity outlook:

- Track: "PEPITO" will move west-northwestward tonight through tomorrow morning before turning more westward beginning tomorrow morning towards the Northern-Central Luzon area. The center of this tropical cyclone is forecast to make landfall over the coast of Aurora-Isabela area tomorrow evening or Wednesday early morning.
- Intensity: "PEPITO" may reach tropical storm category before making landfall. However, there remains a possibility that this tropical cyclone makes landfall as a tropical depression. After crossing the landmass of Luzon, "PEPITO" is forecast to intensify and may reach severe tropical storm category by Thursday.

Hazards affecting land:

- Rainfall: Tonight through tomorrow evening, "PEPITO" will bring moderate to heavy rains over Bicol Region, Northern Samar, Quezon, Aurora, Cagayan, and Isabela. Light to moderate with at times heavy rains will be experienced over Metro Manila, CALABARZON, Cordillera Administrative Region, the rest of Cagayan Valley and Central Luzon, Zamboanga Peninsula, Bangsamoro, Northern Mindanao, Caraga, Samar, Eastern Samar, Romblon, and Marinduque. Flooding (including flashfloods) and rain-induced landslides may occur during heavy or prolonged rainfall especially in areas that are highly or very highly susceptible to these hazards. PAGASA Regional Services Divisions may issue local thunderstorm/rainfall advisories and heavy rainfall warnings as appropriate.
- Winds: High winds (strong to near gale) will be experienced in areas under Tropical Cyclone Wind Signal (TCWS) #1 within 36 hours of first raising of the wind signal. High to gale-force winds with occasional gusts due to the northeasterly surface wind flow will be experienced over Batanes, Babuyan Islands, and the coastal and/or mountainous areas of mainland Cagayan, Apayao, Ilocos Norte and Ilocos Sur.

Hazards affecting coastal waters:

- Warning is in effect over the seaboard of Batanes, Cagayan, Isabela, Ilocos Norte and Ilocos Sur due to rough to very rough seas (2.8 to 5.0 m). Moreover, the seaboard of areas under TCWS #1 will also experience rough to very rough seas (2.5 to 4.5 m). Sea travel is risky over these areas, especially for those using small seacrafts.
- Moderate to rough seas (1.5 to 3.0 m) will prevail over the western and eastern seaboard of Southern Luzon and the eastern seaboard of Eastern Visayas, Caraga, and Davao Region. Those with small seacrafts are advised to take precautionary measures when venturing out to sea. Inexperienced mariners should avoid navigating in these conditions.

Location of eye/center:

- At 10:00 PM today, the center of Tropical Depression "PEPITO" was estimated based on all available data at 305 km East of Virac, Catanduanes (14.1°N, 127.0°E).

Strength:

- Maximum sustained winds of 55 km/h near the center and gustiness of up to 70 km/h.

Movement:

- Moving West Northwestward at 20 km/h.

Forecast Positions:

- 24 Hour (Tomorrow evening): 45 km South Southwest of Casiguran, Aurora (15.9°N, 122.0°E)

- 48 Hour (Wednesday evening): 350 km West of Dagupan City, Pangasinan (15.7°N, 117.1°E)
- 72 Hour (Thursday evening): 540 km West of Dagupan City, Pangasinan (OUTSIDE PAR) (16.2°N, 115.3°E)
- 96 Hour (Friday evening): 710 km West of Dagupan City, Pangasinan (OUTSIDE PAR) (16.6°N, 113.7°E)
- 120 Hour (Saturday evening): 980 km West of Northern Luzon (OUTSIDE PAR) (16.8°N, 111.2°E)

TROPICAL CYCLONE WIND SIGNAL

TCWS #1

(30-60 km/h winds prevailing or expected in 36 hours)

LUZON:

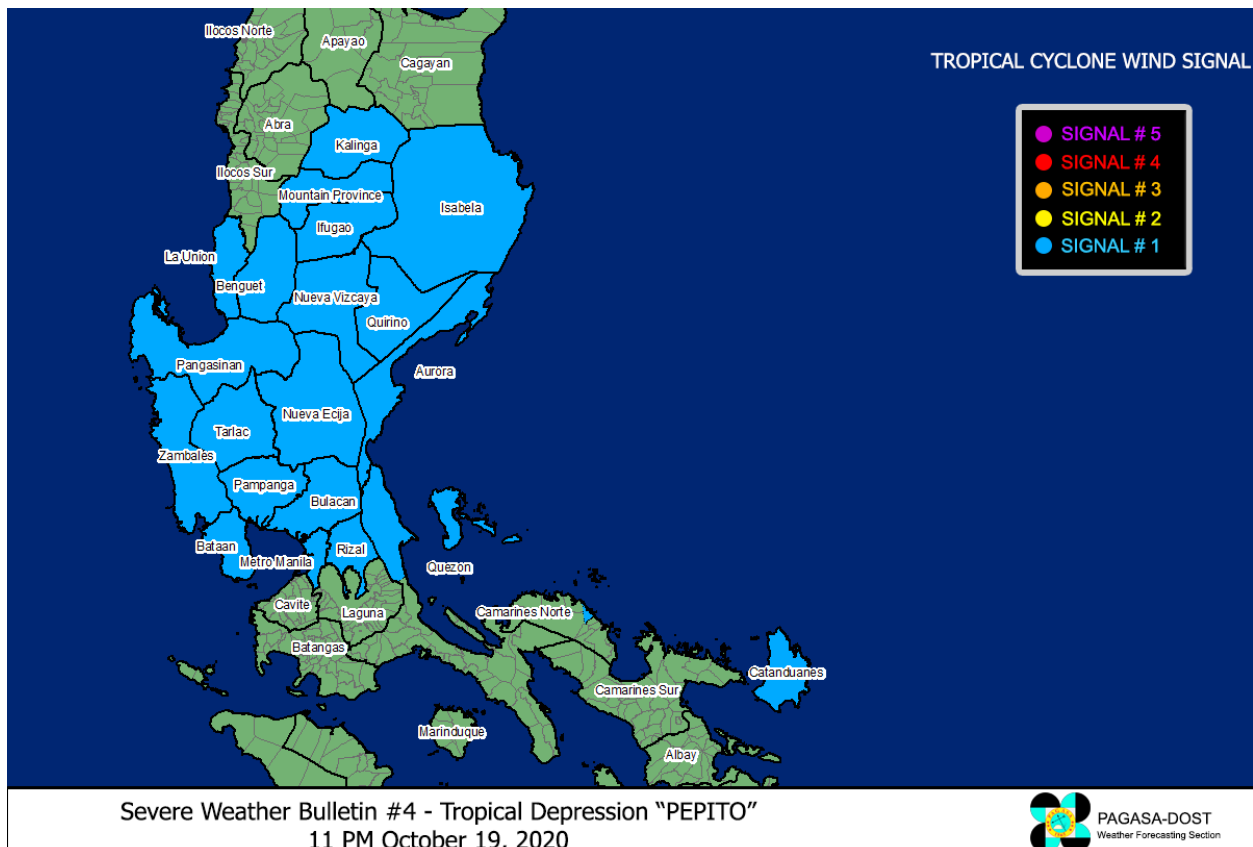
Isabela, Quirino, Nueva Vizcaya, Kalinga, Mountain Province, Ifugao, Benguet, La Union, Pangasinan, Aurora, Nueva Ecija, Tarlac, Zambales, Bulacan, Pampanga, Bataan, Metro Manila, Rizal, the northern portion of Quezon (General Nakar, Infanta, Real) including Polillo Islands, the extreme northern portion of Camarines Norte (Vinzons), and Catanduanes.

Impacts of the wind:

- Very light or no damage to low risk structures,
- Light damage to medium to high risk structures
- Slight damage to some houses of very light materials or makeshift structures in exposed communities. Some banana plants are tilted, a few downed and leaves are generally damaged
- Twigs of small trees may be broken.
- Rice crops, however, may suffer significant damage when it is in its flowering stage.

The public and the disaster risk reduction and management council concerned are advised to take appropriate actions and watch for the next Severe Weather Bulletin to be issued at 2 AM tomorrow.

Link: <http://bagong.pagasa.dost.gov.ph/.../severe-weather.../2>



Track of Tropical Depression "PEPITO"

