

SEVERE WEATHER BULLETIN #23

FOR: SEVERE TROPICAL STORM "#SionyPH" (ATSANI)

TROPICAL CYCLONE: ALERT

ISSUED AT 11:00 PM, 06 November 2020

(Valid for broadcast until the next bulletin to be issued at 11 AM tomorrow or earlier)

SEVERE TROPICAL STORM "SIONY" IS NOW OFF THE SOUTHWESTERN COAST OF TAIWAN AND IS ABOUT TO EXIT THE PHILIPPINE AREA OF RESPONSIBILITY.

Tropical Cyclone Wind Signal #1 over Batanes is now lifted.

Track and intensity outlook:

"SIONY" is forecast to exit the Philippine Area of Responsibility within the next 2 to 3 hours. On the forecast track, this storm is expected to turn southwestward in the next 12 hours and head towards the West Philippine Sea. It may pass close or over the Paracel Islands on Sunday evening. Throughout the forecast period, "SIONY" is forecast to significantly weaken due to increasing unfavorable conditions brought about by the surge of the Northeast Monsoon. It is likely that this storm will degenerate into a Low Pressure Area on Sunday.

Hazards affecting coastal waters:

- In the next 24 hours, rough seas (2.5 to 4.0 m) will prevail over the coastal waters of Batanes and Babuyan Islands due to "SIONY". Sea travel is risky over these waters, especially for mariners of small seacrafts.
- Moderate to rough seas (1.5 to 3.5m) will be experienced over the remaining seaboard of Northern Luzon and the eastern seaboard of the country. Mariners of small seacrafts are advised to take precautionary measures when venturing out to sea. Inexperienced mariners should avoid navigating in these conditions.

Other tropical systems being monitored:

At 10:00 PM today, the Low Pressure Area was estimated at 705 km East of Surigao City, Surigao del Norte (10.2°N, 131.9°E). Additional information on its projected movement, associated land and coastal water hazards, and likelihood of development into a tropical depression are provided in the Weather Advisory #1 issued at 11:00 PM today.

Location of eye/center: At 10:00 PM today, the center of Severe Tropical Storm "SIONY" was estimated based on all available data at 225 km Northwest of Itbayat, Batanes (22.0°N, 120.1°E).

Strength: Maximum sustained winds of 95 km/h near the center and gustiness of up to 115 km/h.

Movement: Moving West Northwestward at 15 km/h.

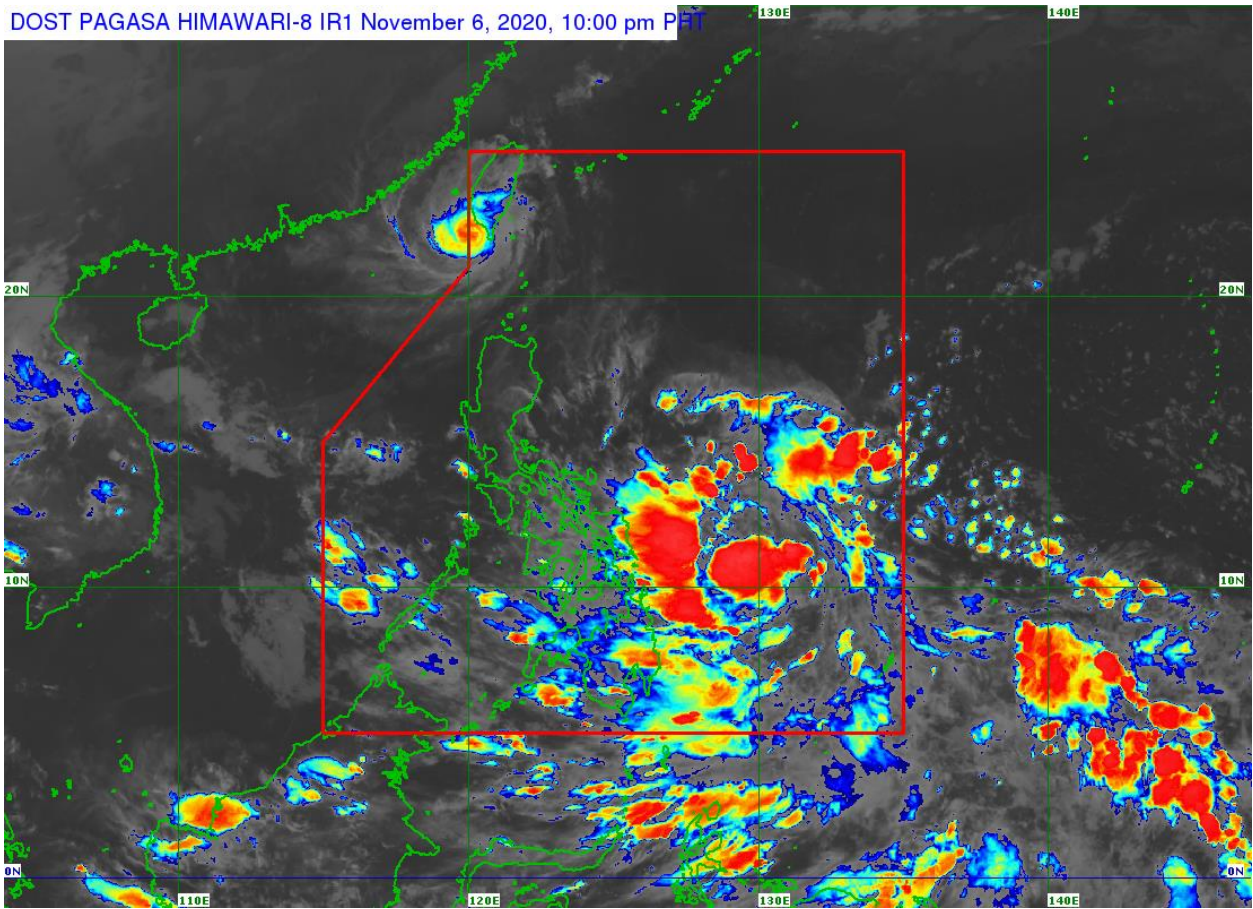
Forecast Positions

- 24 Hour (Tomorrow evening): 470 km West of Itbayat, Batanes (OUTSIDE PAR) (21.5°N, 117.4°E)
- 48 Hour (Sunday evening): 925 km West of Dagupan City, Pangasinan (OUTSIDE PAR) (16.8°N, 111.7°E)

NO TROPICAL CYCLONE WIND SIGNAL

The public and the disaster risk reduction and management council concerned are advised to take appropriate actions and watch for the next update to be incorporated in the 4 AM Public Weather Forecast and in the next Severe Weather Bulletin to be issued at 11 AM tomorrow

or earlier.



Track of Severe Tropical Storm "SIONY" {ATSANI}

