

SEVERE WEATHER BULLETIN #22

FOR: SEVERE TROPICAL STORM "#SionyPH" (ATSANI)

TROPICAL CYCLONE: WARNING

ISSUED AT 5:00 PM, 06 November 2020

(Valid for broadcast until the next bulletin to be issued at 11 PM today)

SEVERE TROPICAL STORM "SIONY" CONTINUES TO MOVE WEST-NORTHWESTWARD OVER THE BASHI CHANNEL SOUTH OF TAIWAN.

Track and intensity outlook:

- Track: On the forecast track, "SIONY" is forecast to move west-northwestward and pass over the sea off the southern coast of Taiwan within 12 hours. "SIONY" is forecast to exit the Philippine Area of Responsibility (PAR) tonight. Afterwards, it will turn southwestward tomorrow morning over the sea to the southwest of Taiwan and move over the West Philippine Sea.

- Intensity: "SIONY" is forecast to maintain its strength in the next 12 hours, then it will significantly weaken due to increasingly unfavorable conditions associated with a surge of the northeasterlies over the West Philippine Sea. It may be downgraded to a Low Pressure Area on Sunday afternoon.

Hazards affecting land areas:

- Strong winds: Strong breeze to near gale conditions will be experienced over Batanes.

- Heavy rains: Today, "SIONY" will bring light to moderate with at times heavy rains over Batanes and Babuyan Islands. Flooding (including flashfloods) and rain-induced landslides may occur during heavy or prolonged rainfall especially in areas identified in geohazard maps as highly or very highly susceptible to these hazards. PAGASA Regional Services Divisions may issue local thunderstorm/rainfall advisories and heavy rainfall warnings while the Hydrometeorology Division and River Basin Flood Forecasting and Warning Centers may issue General Flood Advisories and Basin Flood Bulletins as appropriate.

Hazards affecting coastal waters:

- In the next 24 hours, rough to high seas (3.0 to 8.0 m) will prevail over the coastal waters of Batanes while areas under gale warning will be experiencing rough to very rough seas (3.0 to 4.5 m). The complete list of seaboard where gale warning in effect is detailed in Gale Warning #48 issued at 5:00 PM today. Sea travel is risky over these waters for all types of seacrafts in areas under TCWS and for small seacrafts in areas under gale warning.

- Moderate to rough seas (1.5 to 3.0 m) will be experienced over the western seaboard of Luzon and the eastern seaboard of Southern Luzon, Visayas and Mindanao. Mariners of small seacrafts are advised to take precautionary measures when venturing out to sea. Inexperienced mariners should avoid navigating in these conditions.

Other tropical systems being monitored:

The Low Pressure Area east of Mindanao entered the PAR at 2:00 PM today. At 4:00 PM today, the LPA was estimated at 955 km East of Visayas (10.2°N, 134.4°E). It is forecast to move generally west-northwestward or northwestward towards Eastern Visayas and may likely reach the area tomorrow afternoon. This weather disturbance may develop into Tropical Depression "TONYO" within the next 36 hours. The trough of the LPA will bring scattered light to moderate with at times heavy rains over Mindanao, Eastern and Central Visayas, and Bicol Region.

Location of eye/center: At 4:00 PM today, the center of Severe Tropical Storm "SIONY" was estimated based on all available data at 145 km West Northwest of Itbayat, Batanes (21.5°N, 120.7°E).

Strength: Maximum sustained winds of 95 km/h near the center and gustiness of up to 115 km/h.

Movement: Moving West Northwestward at 20 km/h.

Forecast Positions

- 24 Hour (Tomorrow afternoon): 380 km West Northwest of Itbayat, Batanes (OUTSIDE PAR) (21.9°N, 118.4°E)

• 48 Hour (Sunday afternoon): 780 km North of Pagasa Island, Palawan (OUTSIDE PAR) (17.9°N, 112.9°E)

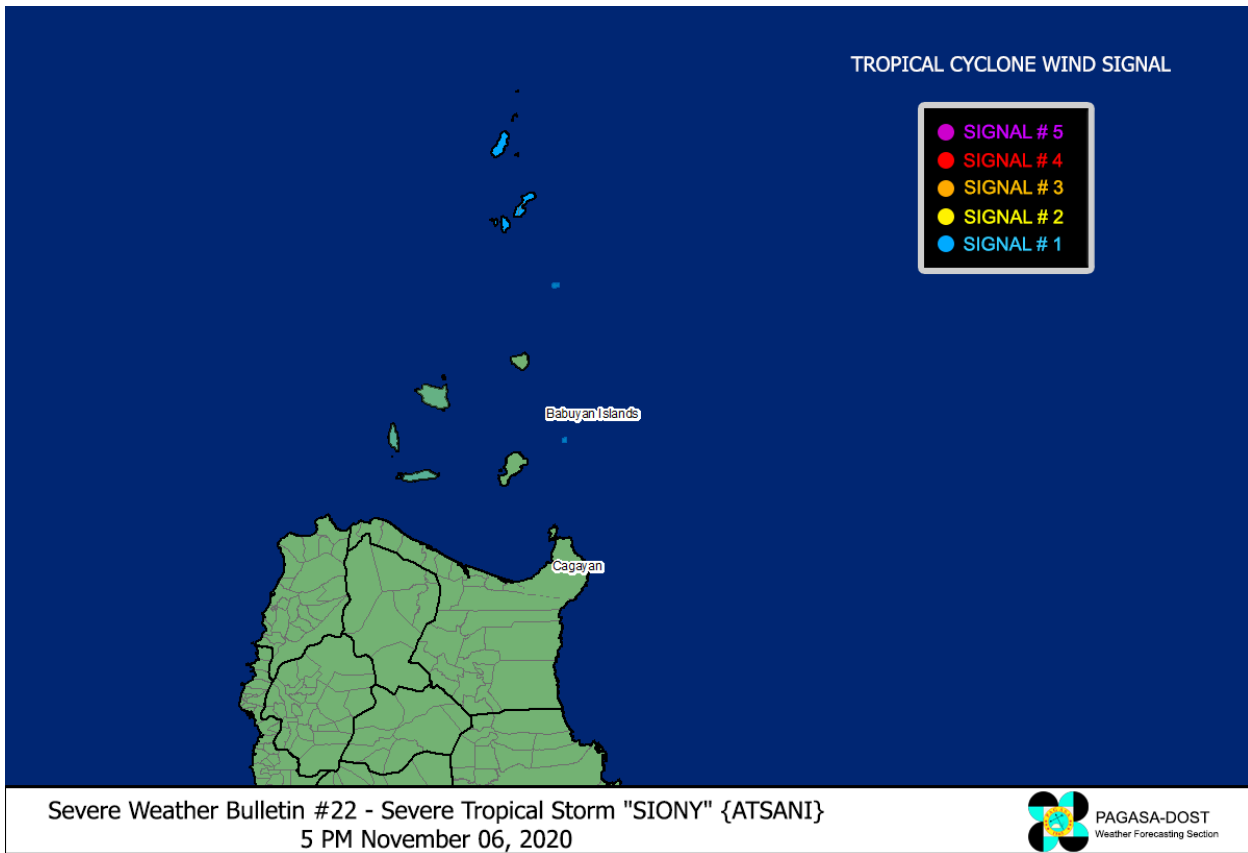
TROPICAL CYCLONE WIND SIGNAL

TCWS #1 (30-60 km/h winds prevailing or expected in 36 hours)

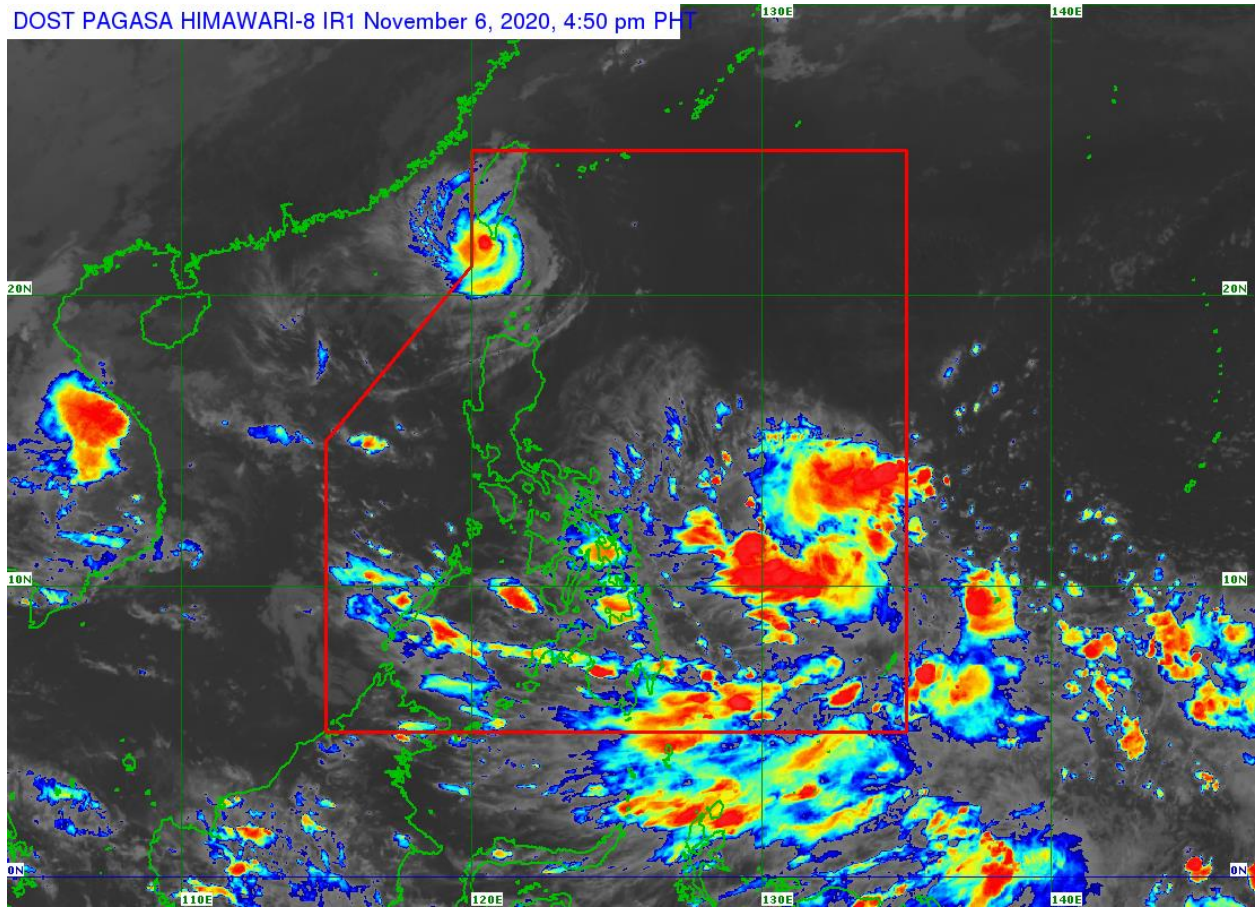
Batanes

TCWS #1 over Babuyan Islands is now lifted.

The public and the disaster risk reduction and management council concerned are advised to take appropriate actions and watch for the next Severe Weather Bulletin to be issued at 11 PM today.



DOST PAGASA HIMAWARI-8 IR1 November 6, 2020, 4:50 pm PH



Track of Severe Tropical Storm "SIONY" {ATSANI}

