

SEVERE WEATHER BULLETIN #19-FINAL

FOR: TYPHOON "#PepitoPH" (SAUDEL)

TROPICAL CYCLONE: ALERT

ISSUED AT 11:00 AM, 22 October 2020

"PEPITO" INTENSIFIES INTO A TYPHOON AND IS NOW OUTSIDE THE PHILIPPINE AREA OF RESPONSIBILITY (PAR).

Track and intensity outlook:

- Track: "PEPITO" left the PAR at 7:30 AM today. On the forecast track, this tropical cyclone will move northwestward today and turn westward beginning tomorrow. It is forecast to make landfall over central portion of Vietnam by Sunday.
- Intensity: "PEPITO" intensified into a typhoon at 8:00 AM today and may reach its peak intensity tomorrow.

Hazards affecting land areas:

- Rainfall: Today, light to moderate with at times heavy rains will be experienced over Batanes, Pangasinan, Zambales, Bataan, Occidental Mindoro, and Palawan. Flooding (including flash floods) and rain-induced landslides may occur during heavy or prolonged rainfall especially in areas that are highly or very highly susceptible to these hazards. PAGASA Regional Services Divisions may issue local thunderstorm/rainfall advisories and heavy rainfall warnings as appropriate.
- Winds: High winds to gale-force winds with occasional gusts due to "PEPITO" will continue to affect the Northern and Central Luzon, especially over the western portions of these areas. Such conditions are more likely to be experienced in coastal and mountainous areas.

Hazards affecting coastal waters:

- Gale Warning remains in effect over the northern and western seaboard of Northern Luzon and the western seaboard of Central Luzon, Batangas, Occidental Mindoro (including Lubang Island), and Palawan (including Calamian and Kalayaan Islands) due to rough to very rough seas (2.8 to 5.5 m). Sea travel is risky over these areas, especially for small seacrafts.
- Moderate to rough seas (1.5 to 2.5 m) will prevail over the eastern seaboard of Luzon. Those with small seacrafts are advised to take precautionary measures when venturing out to sea. Inexperienced mariners should avoid navigating in these conditions.

Other disturbance being monitored (as of 10:00 AM):

- The Tropical Depression outside the PAR weakened into a Low Pressure Area (LPA) at 8:00 AM today. It was estimated based on all available data at 1,870 km East Northeast of Extreme Northern Luzon (25.5°N, 139.4°E). This disturbance remains less likely to enter the PAR.
- The Low Pressure Area outside the PAR was estimated based on all available data at 1,200 km East of Mindanao (9.3°N, 137.2°E). It is likely to enter the PAR tomorrow and may develop into a tropical depression during the weekend. It is not affecting the weather over any portion of the country at this time.

Location of eye/center: At 10:00 AM today, the eye of Typhoon "PEPITO" was located based on all available data at 485 km West Northwest of Dagupan City, Pangasinan or 480 km West of Sinait, Ilocos Sur (OUTSIDE PAR)(17.0°N, 115.9°E).

Strength: Maximum sustained winds of 120 km/h near the center and gustiness of up to 150 km/h.

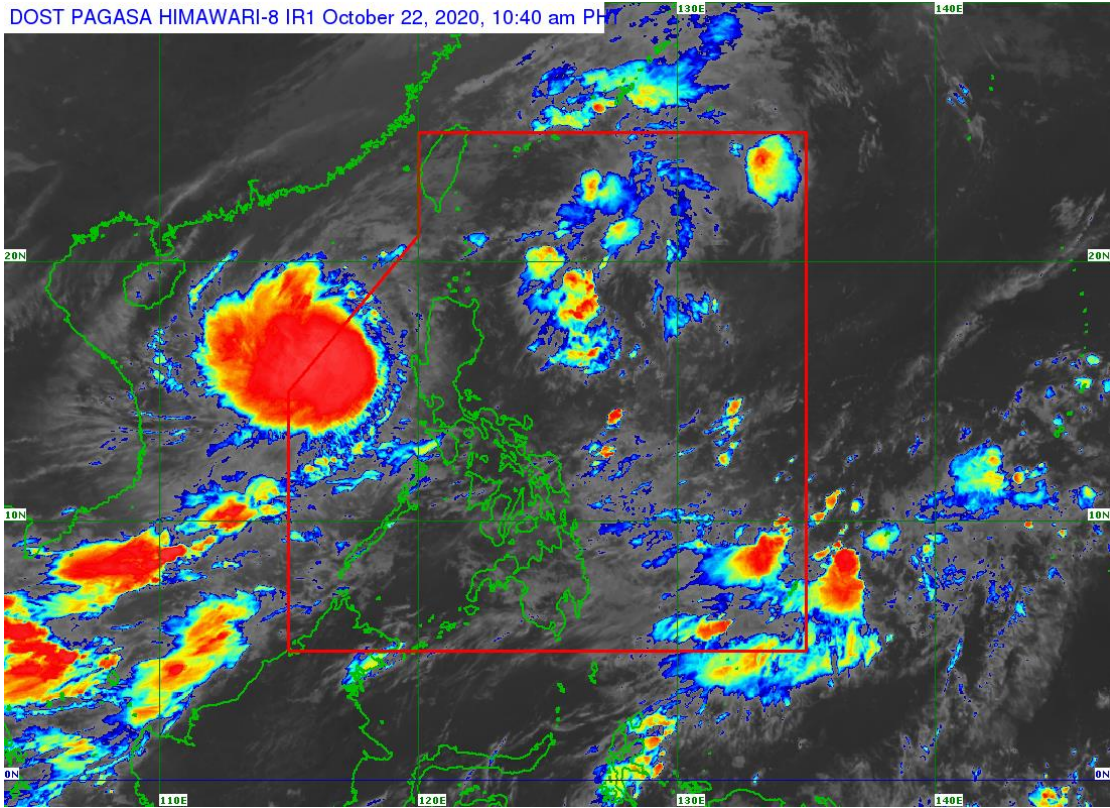
Movement: Moving Northwestward at 20 km/h.

Forecast Positions

- 24 Hour (Tomorrow morning): 580 km West of Laoag City, Ilocos Norte (OUTSIDE PAR) (18.0°N, 115.1°E)
- 48 Hour (Saturday morning): 815 km West of Northern Luzon (OUTSIDE PAR) (17.8°N, 112.7°E)
- 72 Hour (Sunday morning): 1,230 km West of Northern Luzon (OUTSIDE PAR) (17.4°N, 108.8°E)

NO TROPICAL CYCLONE WIND SIGNAL

With this development and unless re-entry occurs, this is the final warning for this weather disturbance.



### Track of Typhoon "PEPITO" {SAUDEL}

