

SEVERE WEATHER BULLETIN #13
FOR: TROPICAL STORM "#PepitoPH" (SAUDEL)
TROPICAL CYCLONE: WARNING
ISSUED AT 2:00 AM, 21 October 2020

(Valid for broadcast until the next bulletin to be issued at 5 AM today)

TROPICAL STORM "PEPITO" CONTINUES TO TRACK WEST-NORTHWESTWARD
OVER THE CARABALLO-CORDILLERA MOUNTAINS

Track and intensity outlook:

- Track: "PEPITO" is forecast to move generally west-northwestward or westward over the Luzon landmass and emerge over the West Philippine Sea this morning. This tropical cyclone may exit the Philippine Area of Responsibility (PAR) tomorrow morning or afternoon.
- Intensity: "PEPITO" will likely maintain its strength while crossing the landmass. However, a slight weakening in its intensity remains a possibility. After crossing Luzon, this tropical cyclone is forecast to further intensify and will likely reach severe tropical storm category tomorrow.

Hazards affecting land areas:

- Rainfall: Today, "PEPITO" will bring moderate to heavy rains over Central Luzon, Cordillera Administrative Region, northern Quezon (including Polillo Islands), Nueva Vizcaya, Quirino, Isabela, mainland Cagayan, La Union, and Pangasinan. Light to moderate with at times heavy rains will be experienced over Metro Manila and the rest of Luzon, Western Visayas, Zamboanga Peninsula, and Bangsamoro. Flooding (including flash floods) and rain-induced landslides may occur during heavy or prolonged rainfall especially in areas that are highly or very highly susceptible to these hazards. PAGASA Regional Services Divisions may issue local thunderstorm/rainfall advisories and heavy rainfall warnings as appropriate.
- Winds: Gale-force winds and high (strong to near gale) winds will be experienced in areas under Tropical Cyclone Wind Signal (TCWS) #2 and #1, respectively. High to gale-force winds due to the northeasterly surface wind flow will also be experienced over the rest of northern Luzon, especially in coastal and mountainous areas.

Hazards affecting coastal waters:

- Gale Warning is in effect over the seaboard of Batanes and Cagayan and the western seaboard of Batangas, Occidental Mindoro (including Lubang Island), and Palawan (including Calamian Islands) due to rough to very rough seas (2.8 to 5.5 m). Moreover, the seaboard of areas under TCWS #1 and 2 will also experience rough to very rough seas (2.5 to 5.5 m). Sea travel is risky over these areas, especially for those using small seacrafts.
- Moderate to rough seas (1.5 to 3.0 m) will prevail over Palawan and the eastern seaboard of Southern Luzon, Eastern Visayas, Caraga, and Davao Region. Those with small seacrafts are advised to take precautionary measures when venturing out to sea. Inexperienced mariners should avoid navigating in these conditions.

Other disturbance being monitored:

- At 1:00 AM today, the Tropical Depression outside the PAR was estimated based on all available data at 1,825 km East Northeast of Basco, Batanes (24.7°N, 139.6°E). It has maximum sustained winds of 55 km/h near the center and gustiness of up to 70 km/h. It is moving east-southeastward at 15 km/h. This disturbance remains less likely to enter the PAR.

Location of eye/center:

- At 1:00 AM today, the center of Tropical Storm "PEPITO" was estimated based on all available data including those from Benguet Doppler Radar in the vicinity of Bambang, Nueva Vizcaya (16.4°N, 121.0°E).

Strength:

- Maximum sustained winds of 75 km/h near the center and gustiness of up to 125 km/h.

Movement:

- Moving West Northwestward at 20 km/h.

Forecast Positions

- 24 Hour (Tonight): 335 km West of Dagupan City, Pangasinan (16.3°N, 117.2°E)
- 48 Hour (Wednesday evening): 480 km West of Sinait, Ilocos Sur (OUTSIDE PAR) (17.0°N, 115.9°E)
- 72 Hour (Thursday evening): 710 km West of Sinait, Ilocos Sur (OUTSIDE PAR) (17.5°N, 113.7°E)
- 96 Hour (Friday evening): 1,050 km West of Northern Luzon (OUTSIDE PAR) (17.5°N, 110.5°E)

TROPICAL CYCLONE WIND SIGNAL

TCWS #2 (61-120 km/h winds prevailing or expected in 24 hours)

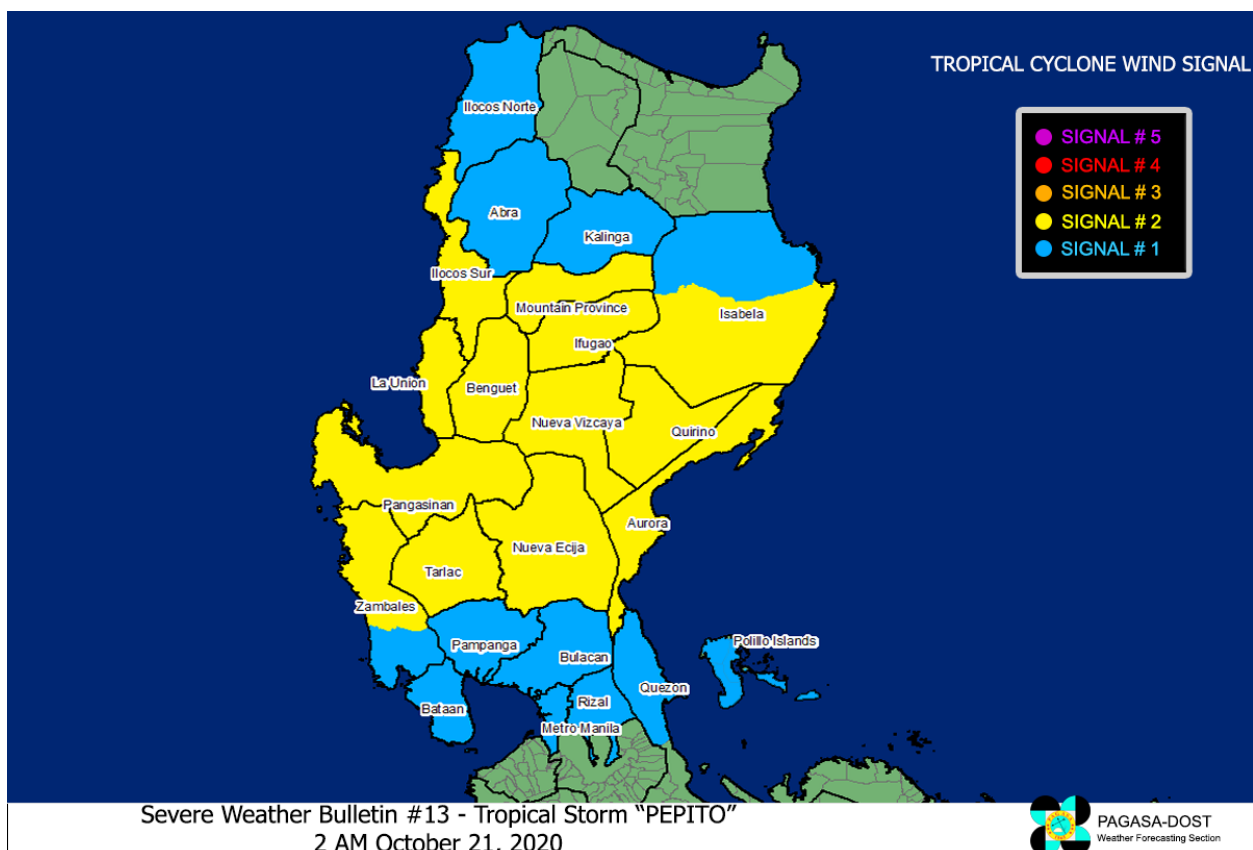
Ilocos Sur, La Union, Pangasinan, Ifugao, Mountain Province, Benguet, the southern portion of Isabela (Palanan, San Mariano, Benito Soliven, Naguilian, Gamu, Burgos, San Manuel, Aurora, Cabatuan, Luna, Reina Mercedes, Cauayan City, Dinapigue, San Guillermo, Angadanan, Alicia, San Mateo, Ramon, San Isidro, Echague, San Agustin, Jones, Santiago City, Cordon), Quirino, Nueva Vizcaya, Aurora, Nueva Ecija, Tarlac, and the northern portion of Zambales (Iba, Palauig, Masinloc, Candelaria, Santa Cruz, Botolan, Cabangan).

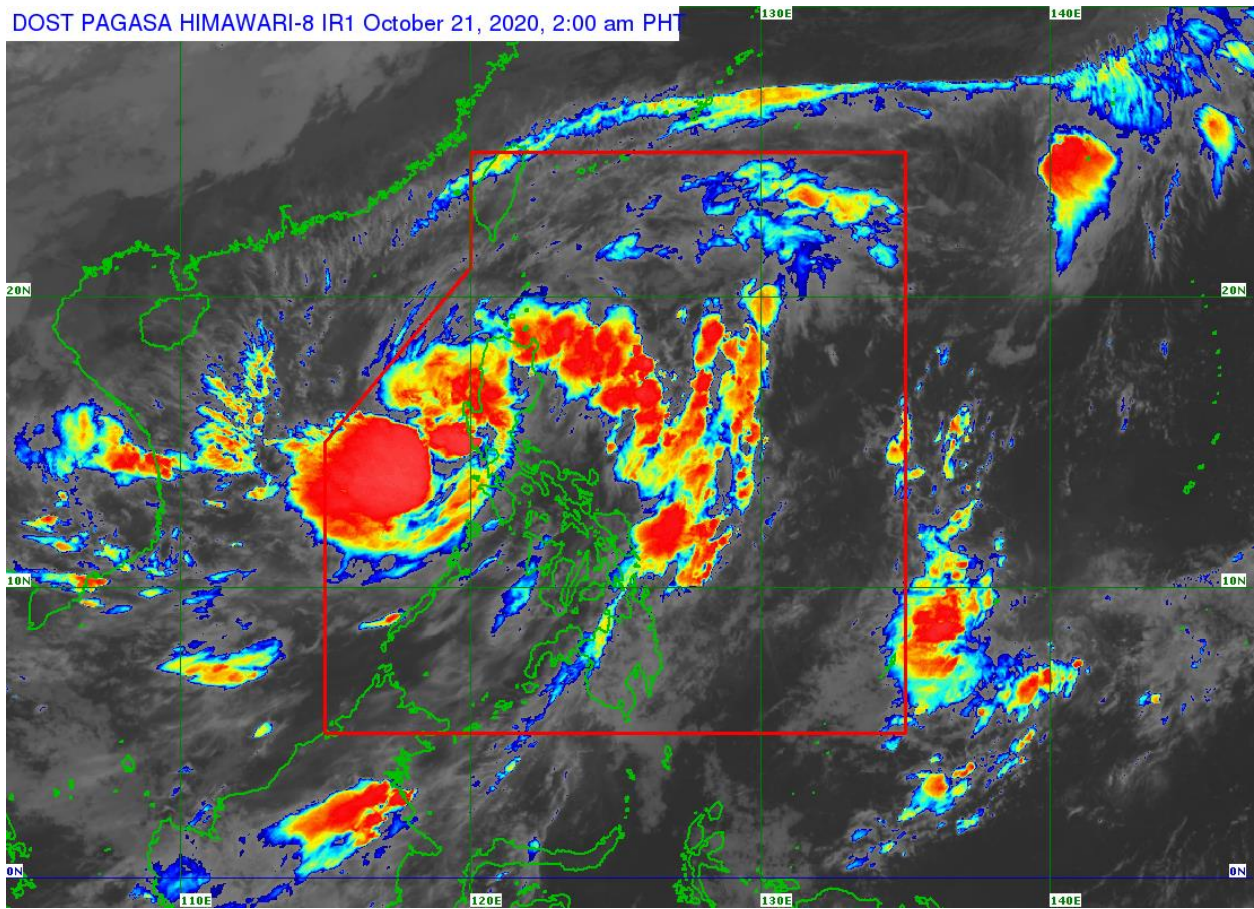
TCWS #1 (30-60 km/h winds prevailing or expected in 36 hours)

Ilocos Norte, Kalinga, Abra, the rest of Isabela, the rest of Zambales, Pampanga, Bulacan, Bataan, Metro Manila, Rizal, and the northern portion of Quezon (General Nakar, Infanta, Real) including Polillo Islands.

The public and the disaster risk reduction and management council concerned are advised to take appropriate actions and watch for the next Severe Weather Bulletin to be issued at 5 AM today.

Link: <http://bagong.pagasa.dost.gov.ph/.../severe-weather.../2>





Track of Tropical Storm "PEPITO" {SAUDEL}

