

SEVERE WEATHER BULLETIN #12
FOR: TYPHOON "#QuintaPH" (MOLAVE)
TROPICAL CYCLONE: WARNING
ISSUED AT 8:00 PM, 25 October 2020

(Valid for broadcast until the next bulletin to be issued at 11 PM today)

TYPHOON "QUINTA" IS IN THE VICINITY OF MALINAO, ALBAY AND WILL CONTINUE TO MOVE WESTWARD OVER ALBAY-CAMARINES SUR AREA.

Landfall:

- The center of Typhoon "QUINTA" made its second landfall in the vicinity of Malinao, Albay at 6:50 PM today.
- Earlier landfall/s: San Miguel Island, Tabaco City, Albay (6:10 PM, 25 October)

Track and intensity outlook:

- Track: "QUINTA" is forecast to continue moving generally westward as it traverses the Southern Luzon area until tomorrow afternoon, then turn west-northwestward over the West Philippine Sea. It is likely to exit the Philippine Area of Responsibility (PAR) on Tuesday afternoon.
- Intensity: "QUINTA" will likely remain as typhoon category as it traverses the Southern Luzon area. This tropical cyclone will continue intensifying over the West Philippine Sea.

Hazards affecting land areas:

- Rainfall: Tonight through tomorrow morning, "QUINTA" will bring moderate to heavy with at times intense rains over Bicol Region, CALABARZON, Aurora, Occidental Mindoro, Oriental Mindoro, Romblon, Marinduque, Calamian Islands, Northern Samar, Eastern Samar, Samar, Biliran, Aklan, Capiz, and Antique. The tail-end of a frontal system will likewise bring moderate to heavy with at times intense rains over Cagayan, Isabela, Apayao, and Ilocos Norte. These two weather systems will also bring light to moderate with at times heavy rains over Metro Manila and the rest of Luzon, Zamboanga Peninsula, Bangsamoro, Northern Mindanao, Caraga, and the rest of Visayas. Flooding (including flash floods), rain-induced landslides, and sediment-laden streamflows (i.e. lahars) may occur during heavy or prolonged rainfall especially in areas that are highly or very highly susceptible to these hazards. PAGASA Regional Services Divisions may issue local thunderstorm/rainfall advisories and heavy rainfall warnings as appropriate.
- Strong winds: Typhoon-force winds will be experienced in areas under Tropical Cyclone Wind Signal (TCWS) #3, storm-force winds in areas under TCWS #2, and strong breeze to near gale conditions in areas under TCWS #1. Potential impacts of these wind conditions to structures and vegetation are detailed in the TCWS section of this bulletin. In other areas, strong breeze to gale conditions will also prevail over Batanes, Babuyan Islands, and the northern coastal areas of Ilocos Norte and mainland Cagayan due to the northeasterly surge.

Hazards affecting coastal waters:

- Storm surge of 2.0 to 3.0 meters may affect the eastern coastal areas of Quezon, Camarines Norte, and Camarines Sur, and 1.0 to 2.0 meters over the coastal areas of Northern Samar, Batangas, Marinduque, Romblon, Occidental Mindoro, Oriental Mindoro, and the rest of Quezon and Bicol Region.
- Today, rough to very rough seas will prevail over the entire seaboard of Northern Luzon (3.0 to 5.5 m) and the seaboard of Aurora, Zambales, northern Palawan including Calamian and Kalayaan Islands (2.5 to 4.5 m), and rough to high over areas under TCWS (2.5 to 8.0 m). Sea travel is risky over these waters, especially for small seacrafts.
- Moderate to rough seas (1.2 to 2.8 m) will be experienced over the other seaboard of the country today. Mariners of small seacrafts are advised to take precautionary measures when venturing out to sea. Inexperienced mariners should avoid navigating in these conditions.

Location of eye/center At 7:00 PM today, the eye of Typhoon "QUINTA" was located based on all available data including Daet Doppler Radar in the vicinity of Malinao, Albay (13.4°N, 123.7°E).

Strength Maximum sustained winds of 130 km/h near the center and gustiness of up to 180 km/h.
Movement Moving Westward at 25 km/h.

Forecast Positions

- 24 Hour (Tomorrow afternoon): 245 km West of Calapan City, Oriental Mindoro (13.5°N, 118.9°E)
- 48 Hour (Tuesday afternoon): 815 km West of Southern Luzon (OUTSIDE PAR) (14.1°N, 113.5°E)

TROPICAL CYCLONE WIND SIGNAL

TCWS #3 (121-170 km/h winds prevailing or expected in 18 hours)

- Luzon

Catanduanes, Camarines Norte, Camarines Sur, Albay, Sorsogon, Burias and Ticao Islands, the southern portion of Quezon (Mauban, Sampaloc, Lucban, Candelaria, Dolores, Tiaong, San Antonio, Sariaya, Tayabas City, Lucena City City, Pagbilao, Atimonan, Padre Burgos, Agdangan, Unisan, Plaridel, Gumaca, Pitogo, Macalelon, General Luna, Catanauan, Mulanay, San Francisco, San Andres, San Narciso, Buenavista, Lopez, Guinayangan, Calauag, Tagkawayan, Quezon, Alabat, Perez), the southeastern portion of Laguna (Paete, Kalayaan, Lumban, Cavinti, Luisiana, Majayjay, Liliw, Rizal, Nagcarlan, San Pablo City, Alaminos, Magdalena, Pagsanjan), Batangas, the extreme northern portion of Romblon (Corcuera, Banton, Concepcion), Marinduque, the northern portion of Oriental Mindoro (Bongabong, Bansud, Gloria, Pinamalayan, Socorro, Pola, Naujan, Naujan Lake, Victoria, Calapan City, Baco, San Teodoro, Puerto Galera), the northern portion of Occidental Mindoro (Abra de Ilog, Paluan, Mamburao, Santa Cruz, Sablayan) including Lubang Island

Impacts of the wind

- Heavy damage to high-risk structures;
- Moderate damage to medium-risk structures;
- Light damage to low risk structures
- Increasing damage (up to more than 50%) to old, dilapidated residential structures and houses of light materials. Majority of all nipa and cogon houses may be unroofed or destroyed
- Houses of medium strength materials (old, timber or mixed timber-CHB structures, usually with G.I. roofing's); some warehouses or bodega-type structures are unroofed.
- There may be widespread disruption of electrical power and communication services.
- Almost all banana plants are downed.
- Some big trees (acacia, mango, etc.) are broken or uprooted.
- Dwarf-type or hybrid coconut trees are tilted or downed.
- Rice and corn crops may suffer heavy losses.
- Damage to shrubbery and trees with foliage blown off; some large trees blown down

TCWS #2 (61-120 km/h winds prevailing or expected in 24 hours)

- Luzon

Masbate, the central portion of Quezon (Infanta, Real) including Polillo Islands, Cavite, the rest of Laguna, the rest of Romblon, the rest of Oriental Mindoro, and the rest of Occidental Mindoro

- Visayas

Northern Samar

Impacts of the wind

- Light to Moderate damage to high risk structures;
- Very light to light damage to medium-risk structures;
- No damage to very light damage to low risk structures
- Unshielded, old dilapidated schoolhouses, makeshift shanties, and other structures of light materials are partially damaged or unroofed.
- A number of nipa and cogon houses may be partially or totally unroofed.
- Some old galvanized iron (G.I.) roofs may be peeled or blown off.
- Some wooden, old electric posts are tilted or downed.

- Some damage to poorly constructed signs/billboards
 - In general, the winds may bring light to moderate damage to the exposed communities. Most banana plants, a few mango trees, ipil-ipil and similar types of trees are downed or broken.
 - Some coconut trees may be tilted with few others broken.
 - Rice and corn may be adversely affected.
 - Considerable damage to shrubbery and trees with some heavy-foliaged trees blown down
- TCWS #1 (30-60 km/h winds prevailing or expected in 36 hours)

• Luzon

The rest of Quezon, Rizal, Metro Manila, Bulacan, Pampanga, Bataan, the southern portion of Zambales (San Marcelino, San Felipe, San Narciso, Castillejos, Subic, San Antonio, Olongapo City, Botolan, Cabangan), and Calamian Islands

• Visayas

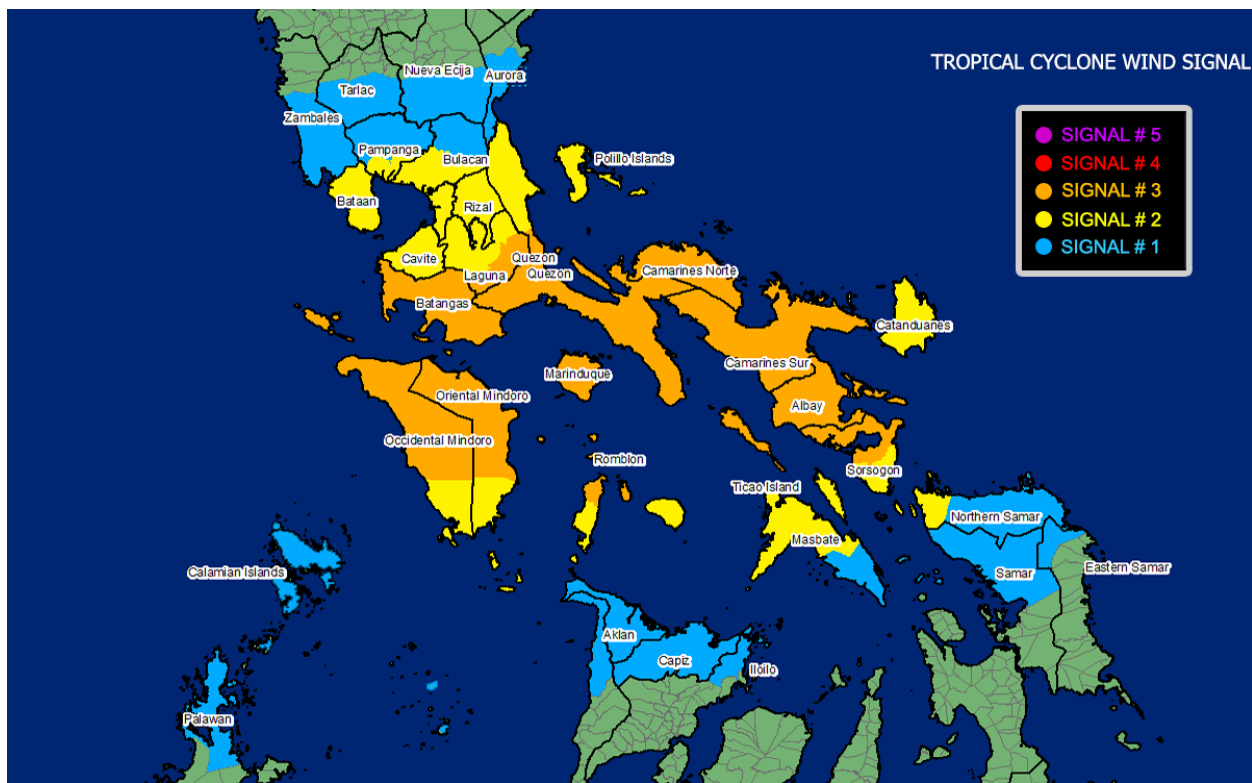
The northern portion of Samar (Calbayog City, Matuguinao, Tagapul-An, Santo Nino, Almagro, Santa Margarita, Gandara, San Jose de Buan, Pagsanghan, Tarangnan, San Jorge, Catbalogan City, Jiabong, Motiong, Paranas), the northern portion of Eastern Samar (Maslog, Jipapad, Arteche, San Policarpo, Oras, Dolores, Can-Avid, Taft), the northern portion of Capiz (Sapi-An, Ivisan, Roxas City, Panay, Pilar, Pontevedra, President Roxas), Aklan, the northern portion of Antique (Caluya, Libertad, Pandan, Sebaste, Culasi), and the northeastern portion of Iloilo (Batad, Balasan, Estancia, Carles)

Impacts of the wind

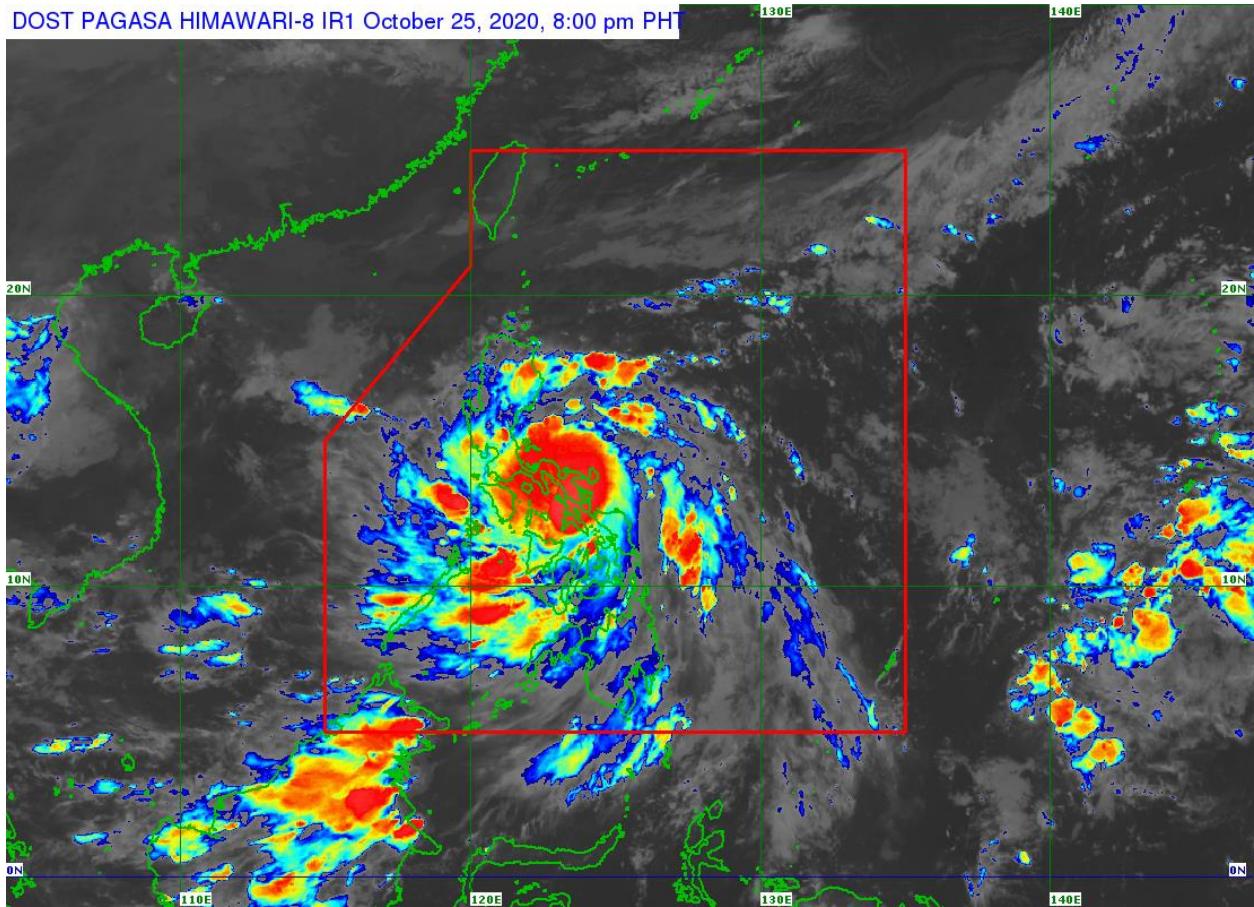
- Very light or no damage to low risk structures,
- Light damage to medium to high risk structures
- Slight damage to some houses of very light materials or makeshift structures in exposed communities. Some banana plants are tilted, a few downed and leaves are generally damaged
- Twigs of small trees may be broken.
- Rice crops, however, may suffer significant damage when it is in its flowering stage.

The public and the disaster risk reduction and management council concerned are advised to take appropriate actions and watch for the next Severe Weather Bulletin to be issued at 11 PM today.

Link: <http://bagong.pagasa.dost.gov.ph/.../severe-weather.../2>



DOST PAGASA HIMAWARI-8 IR1 October 25, 2020, 8:00 pm PHT



Track of Typhoon "QUINTA" {MOLAVE}

