

SEVERE WEATHER BULLETIN #10

FOR: SEVERE TROPICAL STORM "#QuintaPH" (MOLAVE)

TROPICAL CYCLONE: WARNING

ISSUED AT 2:00 PM, 25 October 2020

(Valid for broadcast until the next bulletin to be issued at 5 PM today)

SEVERE TROPICAL STORM "#QuintaPH" CONTINUES TO INTENSIFY AS IT INCREASES ITS THREAT OVER THE CATANDUANES-ALBAY AREA.

Track and intensity outlook:

- Track: "QUINTA" is forecast to continue moving generally westward until its landfall over the Catanduanes-Albay area between this afternoon and evening. Afterwards, it will traverse the Southern Luzon area until tomorrow afternoon, then turn west-northwestward over the West Philippine Sea. It is likely to exit the Philippine Area of Responsibility (PAR) on Tuesday afternoon.
- Intensity: Further intensification prior to landfall over Bicol Region remains likely and the possibility of "QUINTA" making landfall as a typhoon is not ruled out. After crossing the Philippine archipelago, this tropical cyclone will continue intensifying over the West Philippine Sea.

Hazards affecting land areas:

- Rainfall: Today through tomorrow morning, "QUINTA" will bring moderate to heavy with at times intense rains over Bicol Region, CALABARZON, Aurora, Occidental Mindoro, Oriental Mindoro, Romblon, Marinduque, Calamian Islands, Northern Samar, Eastern Samar, Samar, Biliran, Aklan, and Antique. The tail-end of a frontal system will likewise bring moderate to heavy with at times intense rains over Cagayan, Isabela, Apayao, and Ilocos Norte. These two weather systems will also bring light to moderate with at times heavy rains over Metro Manila and the rest of Luzon, Zamboanga Peninsula, Bangsamoro, Northern Mindanao, Caraga, and the rest of Visayas. Flooding (including flash floods), rain-induced landslides, and sediment-laden streamflows (i.e. lahars) may occur during heavy or prolonged rainfall especially in areas that are highly or very highly susceptible to these hazards. PAGASA Regional Services Divisions may issue local thunderstorm/rainfall advisories and heavy rainfall warnings as appropriate.
- Strong winds: Stormy conditions will be experienced in areas under Tropical Cyclone Wind Signal (TCWS) #2 while strong breeze to near gale conditions will be experienced in areas under TCWS #1. Potential impacts of these wind conditions to structures and vegetation are detailed in the TCWS section of this bulletin. In other areas, strong breeze to gale conditions will also prevail over Batanes, Babuyan Islands, and the northern coastal areas of Ilocos Norte and mainland Cagayan due to the northeasterly surge.

Hazards affecting coastal waters:

- Storm surge of 1.0 to 2.0 meters may affect the coastal areas of Northern Samar, Bicol Region, and the central and southern portions of Quezon.
- Today, rough to very rough seas will prevail over the entire seaboard of Northern Luzon (3.0 to 5.5 m) and the seaboard of Aurora, Zambales, northern Palawan including Calamian and Kalayaan Islands (2.5 to 4.5 m), and all areas under TCWS #2 and #1 (2.5 to 5.5 m). Sea travel is risky over these waters, especially for small seacrafts.
- Moderate to rough seas (1.2 to 2.8 m) will be experienced over the other seaboard of the country today. Mariners of small seacrafts are advised to take precautionary measures when venturing out to sea. Inexperienced mariners should avoid navigating in these conditions.

Location of eye/center: At 1:00 PM today, the center of Severe Tropical Storm "QUINTA" was estimated based on all available data at 95 km East of Virac, Catanduanes (13.5°N, 125.1°E).

Strength: Maximum sustained winds of 110 km/h near the center and gustiness of up to 135 km/h.

Movement: Moving Westward at 25 km/h.

Forecast Positions

- 24 Hour (Tomorrow morning): In the vicinity of Abra de Ilog, Occidental Mindoro (13.3°N, 120.8°E)
- 48 Hour (Tuesday morning): 590 km West of Tanauan City, Batangas (13.8°N, 115.6°E)
- 72 Hour (Wednesday morning): 1,025 km West of Central Luzon (OUTSIDE PAR) (14.5°N, 110.8°E)

TROPICAL CYCLONE WIND SIGNAL

TCWS #2 (61-120 km/h winds prevailing or expected in 24 hours)

Catanduanes, Camarines Norte, Camarines Sur, Albay, Sorsogon, Masbate including Burias and Ticao Islands, the central and southern portions of Quezon (Mauban, Sampaloc, Lucban, Dolores, Candelaria, Tiaong, San Antonio, Sariaya, Tayabas City, Lucena City, Pagbilao, Atimonan, Perez, Alabat, Calauag, Quezon, Tagkawayan, Guinayangan, Lopez, Pitogo, Plaridel, Gumaca, Unisan, Agdangan, Padre Burgos, Macalelon, Catanauan, General Luna, Buenavista, San Narciso, Mulanay, San Andres, San Francisco), the southeastern portion of Laguna (Paete, Kalayaan, Lumban, Cavinti, Luisiana, Majayjay, Liliw, Rizal, Nagcarlan, San Pablo City, Alaminos, Magdalena, Pagsanjan), Batangas, Marinduque, Romblon, Oriental Mindoro, Occidental Mindoro including Lubang Island, and Northern Samar

Impacts of the wind

- Light to Moderate damage to high risk structures;
- Very light to light damage to medium-risk structures;
- No damage to very light damage to low risk structures
- Unshielded, old dilapidated schoolhouses, makeshift shanties, and other structures of light materials are partially damaged or unroofed.
- A number of nipa and cogon houses may be partially or totally unroofed.
- Some old galvanized iron (G.I.) roofs may be peeled or blown off.
- Some wooden, old electric posts are tilted or downed.
- Some damage to poorly constructed signs/billboards
- In general, the winds may bring light to moderate damage to the exposed communities. Most banana plants, a few mango trees, ipil-ipil and similar types of trees are downed or broken.
- Some coconut trees may be tilted with few others broken.
- Rice and corn may be adversely affected.
- Considerable damage to shrubbery and trees with some heavy-foliaged trees blown down

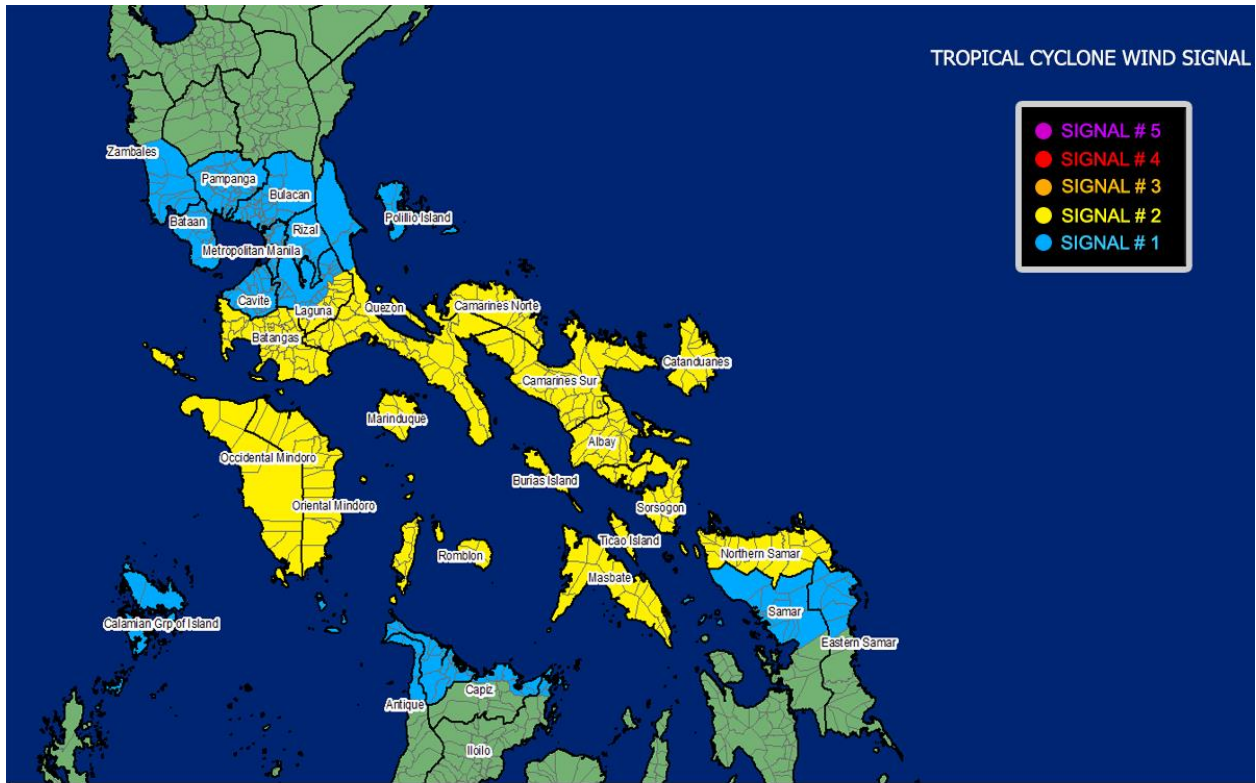
TCWS #1 (30-60 km/h winds prevailing or expected in 36 hours)

The rest of Quezon, the rest of Laguna, Rizal, Cavite, Metro Manila, Bulacan, Pampanga, Bataan, the southern portion of Zambales (San Marcelino, San Felipe, San Narciso, Castillejos, Subic, San Antonio, Olongapo City, Botolan, Cabangan), Calamian Islands, The northern portion of Samar (Calbayog City, Matuguinao, Tagapul-An, Santo Nino, Almagro, Santa Margarita, Gandara, San Jose de Buan, Pagsanghan, Tarangnan, San Jorge, Catbalogan City, Jiabong, Motiong, Paranas), the northern portion of Eastern Samar (Maslog, Jipapad, Arteche, San Policarpo, Oras, Dolores, Can-Avid, Taft), the northern portion of Capiz (Sapi-An, Ivisan, Roxas City, Panay, Pilar, Pontevedra, President Roxas), Aklan, the northern portion of Antique (Caluya, Libertad, Pandan, Sebaste, Culasi), and the northeastern portion of Iloilo (Batad, Balasan, Estancia, Carles)

Impacts of the wind

- Very light or no damage to low risk structures,
- Light damage to medium to high risk structures
- Slight damage to some houses of very light materials or makeshift structures in exposed communities. Some banana plants are tilted, a few downed and leaves are generally damaged
- Twigs of small trees may be broken.
- Rice crops, however, may suffer significant damage when it is in its flowering stage.

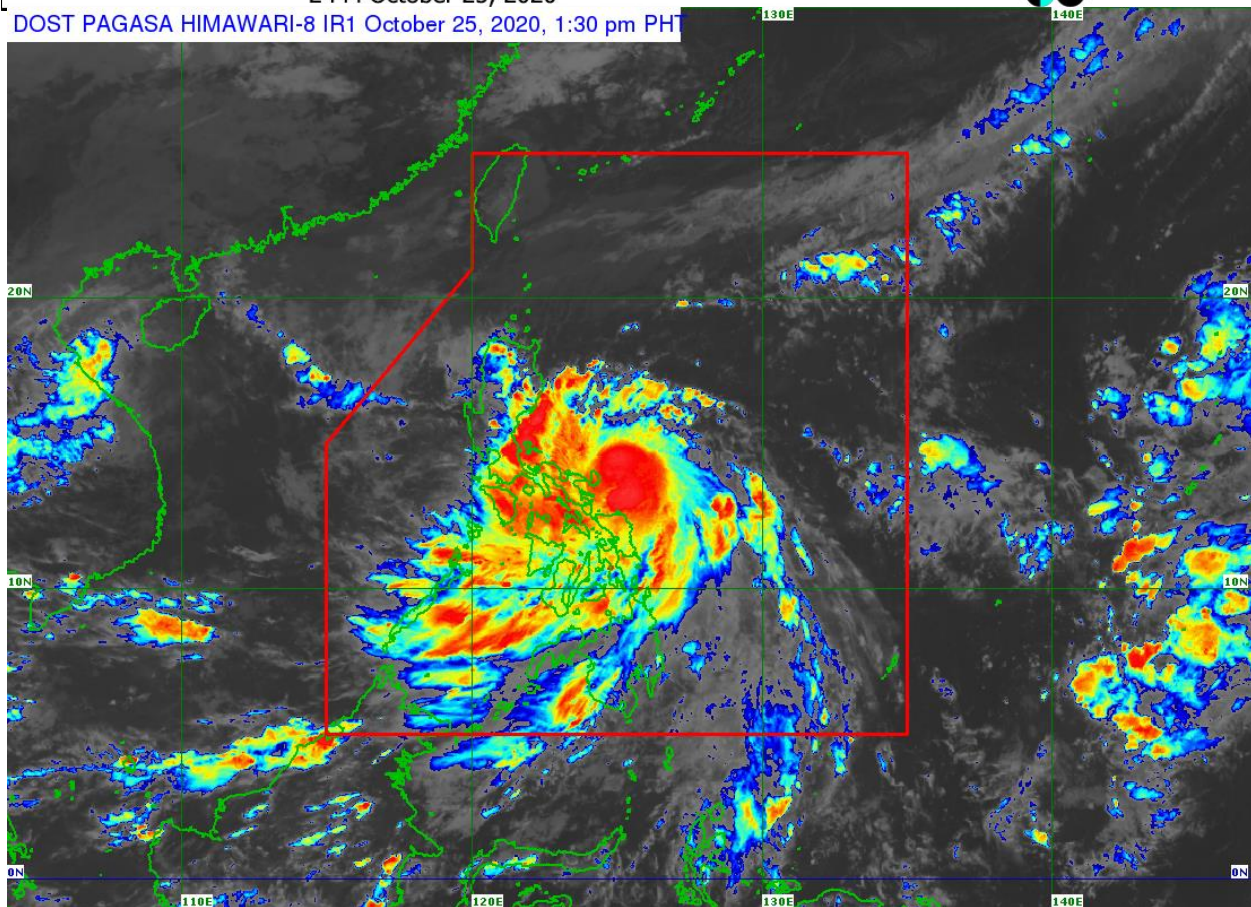
The public and the disaster risk reduction and management council concerned are advised to take appropriate actions and watch for the next Severe Weather Bulletin to be issued at 5 PM today.
Link: <http://bagong.pagasa.dost.gov.ph/.../severe-weather.../2>



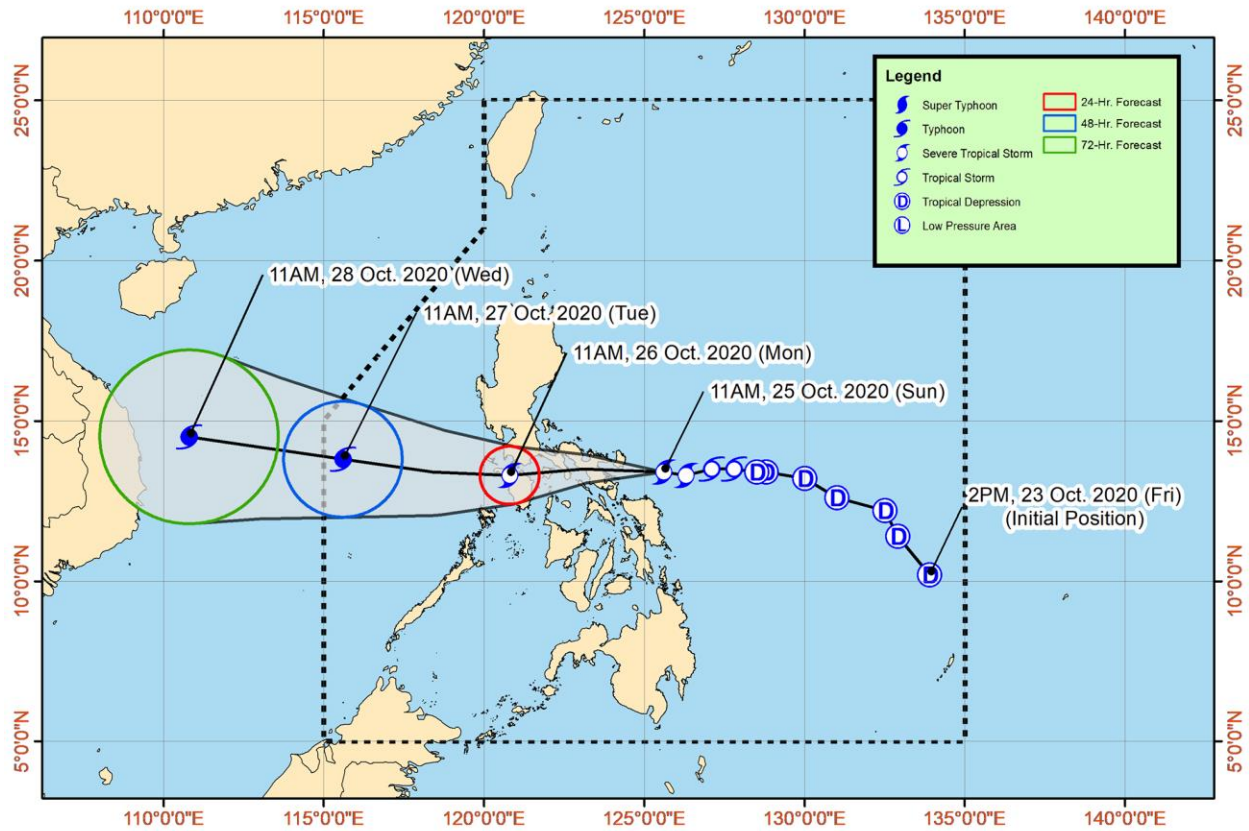
Severe Weather Bulletin #10 - Tropical Storm "QUINTA"
2 PM October 25, 2020



DOST PAGASA HIMAWARI-8 IR1 October 25, 2020, 1:30 pm PH



Track of Severe Tropical Storm "QUINTA" {MOLAVE}



Philippine Atmospheric Geophysical and Astronomical Services Administration